

- 1
- 2
- 3
- 4
- 5
- 6
- 7
- 8
- 9
- 10
- 11
- 12
- 13
- 14
- 15
- 16
- 17
- 18
- 19

STANDARD EXECUTIONS

**GN 184:** turned black-oxide steel.

**GN 184-ZB:** turned and zinc-plated steel, blue passivated

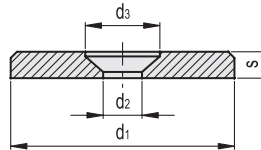
FEATURES AND APPLICATIONS

GN 184 washers are generally used on shafts to fit handwheels with an axial keyway.



**Conversion Table**  
1 mm = 0.039 inch

d1	
mm	inch
12	0.47
16	0.62
20	0.78
22	0.86
25	0.98
28	1.09
32	1.25
36	1.40
40	1.56
45	1.76
52	2.03



GN 184

METRIC

Code	Description	d1	d2	d3	s	Countersunk screws	⚖
GN.31091	GN 184-12	12	3.2	6.5	2.5	M3	2
GN.31101	GN 184-16	16	4.3	8.5	3	M4	4
GN.31111	GN 184-20	20	4.3	8.5	3	M4	6
GN.31121	GN 184-22	22	5.3	10.3	3.5	M5	8
GN.31131	GN 184-25	25	5.3	10.3	3.5	M5	12
GN.31141	GN 184-28	28	5.3	10.3	3.5	M5	15
GN.31151	GN 184-32	32	6.4	12.3	4	M6	22
GN.31161	GN 184-36	36	6.4	12.3	4	M6	29
GN.31171	GN 184-40	40	6.4	12.3	5	M6	45
GN.31181	GN 184-45	45	6.4	12.3	6	M6	71
GN.31191	GN 184-52	52	6.4	12.3	6	M6	94

GN 184-ZB

Code	Description	d1	d2	d3	s	Countersunk screws	⚖
GN.31096	GN 184-12-ZB	12	3.2	6.5	2.5	M3	2
GN.31106	GN 184-16-ZB	16	4.3	8.5	3	M4	4
GN.31112	GN 184-20-ZB	20	4.3	8.5	3	M4	6
GN.31113	GN 184-22-ZB	22	5.3	10.3	3.5	M5	8
GN.31114	GN 184-25-ZB	25	5.3	10.3	3.5	M5	12
GN.31115	GN 184-28-ZB	28	5.3	10.3	3.5	M5	15
GN.31116	GN 184-32-ZB	32	6.4	12.3	4	M6	22
GN.31117	GN 184-36-ZB	36	6.4	12.3	4	M6	29
GN.31118	GN 184-40-ZB	40	6.4	12.3	5	M6	45
GN.31119	GN 184-45-ZB	45	6.4	12.3	6	M6	71
GN.31120	GN 184-52-ZB	52	6.4	12.3	6	M6	94

Standard machine parts